



# VISITORS WELCOME



**BUY-SELL-TRADE-TRAIN**

Quality Walking & Spotted Horses FOR SALE  
Halter Puppies & Ascendable Puppies Available

*We are a fully licensed and bonded livestock facility.*

POTTERDALE, TN | ESTABLISHED 1988/2014/2020 | PHONE: 615-952-1888

photos by Ben Shallen + associated, Lisa McCoy Photography & Studio Art + associated



WGC A Girl's Best Friend  
AOT Spotted Saddle Horse Pleasure  
Owned by the Mahaney Family



America's  
Crown Jewel  
Solid Color Pleasure  
Owned by the  
Fizer Family  
of Dickson, TN



WGC Color Me  
With Honors

2 & 3 Year Old Trail Pleasure  
Owned by Tim & Melissa Sager  
of Murfreesboro, TN



Chill Bumps  
2 & 3 Year Old  
Amateur Country  
Pleasure  
Owned by the  
Mahaney Family



Walking K  
SHOW HORSES

Kalie Mahaney  
Ashland City, Tennessee





All rights reserved. No portion of the material, written or artistic, may be reprinted or used in any way without the permission of NSSHA.

## OFFICE HOURS:

Monday thru Thursday  
9 a.m. to 5 p.m.  
Central Time  
Closed on Friday

Calls answered 7 days a week.  
Voice mail available. If we are  
unable to answer, please leave  
a message, your call will be  
answered ASAP.

Donna Fletcher  
*Office Manager*

## 2020 BOARD OF DIRECTORS

Chairman of the Board:  
Daniel Forman

Vice-Chairman:  
Timmy Parks

Recording Secretary:  
Lee Wilson

Debbie Williams

Fount Darnell

Stephanie Richardson

Bradley Parks

Roxy Johnson

Leighanne Tibbs

Debbie Herdahl

Shelli Mehaffey

Bobby Parker

Phillip Gilliam

Kaitlyn Rippy

Kalie Mahaney

Copyright 1980

**THE NATIONAL SPOTTED  
SADDLE HORSE JOURNAL**

**Vol. 45, No. 1 ~ Fall 2020**

Official Publication of the National Spotted  
Saddle Horse Association, Inc.

The staff of the Journal and the National Spotted Saddle Horse Association, Inc. are not responsible for the opinions and statements expressed in paid advertisements or in articles written and sent in for publication. These are opinions and not necessarily the opinions of this publication. We will accept photographs submitted for publication in the Journal, but will not accept responsibility for the quality of reproduction of the photographs; nor will we accept financial obligation for their use. We will make every effort to publish your ads as you wish without mistakes. We will correct mistakes, if brought to our attention within ten days after you receive the publication in the earliest issue available. This does not relieve the advertiser from his financial obligations for the advertisement. Photographs cannot be returned and become the property of the Journal unless previous arrangements have been made by the Editor. We cannot be responsible for material while in our hands. Deadline for Advertisement will be the 1st of the month prior to the month of publication. Advertising Rates Available Upon Request of the Journal Office.

**JOURNAL  
SUBSCRIPTION  
RATES  
FREE**

**The NSSHA Journal is Free  
for Everyone to view at  
[nssha.com](http://nssha.com)**

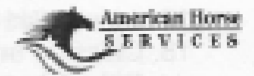
**Click NSSHA Journals on the left menu**

## NOTICE

All returned checks will carry a \$25 Service Charge. We are charged by our bank for this service, and must pass the charge on to all owners of

returned checks.

All accounts not paid by the 25th of the month following the 1st of the month billing will incur a 1.5% service charge per month. (18% per year).



**41st ANNUAL  
NATIONAL SPOTTED SADDLE HORSE  
ASSOCIATION, INC.**

**WORLD GRAND CHAMPIONSHIP SHOW**

**SEPTEMBER 17, 18 and 19, 2020 – 7:00 p.m.**

**OFFICIALS**

**Master of Ceremonies: Jason Coker and David Mahaney**

**Riingmaster: Judy Pugh**

**Organist: Eddie Hixson**

**Photographer: Sid Abernathy**

**Judges: Russ Keyser and Bobby Richards**

**Coffee Co. Fairgrounds  
99 Lakeview Dr  
Manchester, Tn. 37355**

# Corporate Sponsors

**Viam Manufacturing**  
Manchester, Tn

**Rowdy Ranch Catering**  
Tony Edwards  
Shelbyville, Tn

**A to Z Embroidery**  
Mark & Debbie Williams  
Shelbyville, TN

**Southwind Stables**  
Daniel & Janie Forman  
Pontotoc, MS

**Rutherford Farmers Co-op**  
Murfreesboro, TN

**Tibbs Highway  
Horse Farms  
Mike & Leighanne Tibbs &  
Sons**  
Petersburg, TN

**NSSHA Youth Committee**

**Keith & Angela Hayes**  
Wartrace, TN

**Roxy Johnson**  
Dunlap, TN

**NSSHA Amateur  
Committee**

**Sager Stables**  
Tim & Melissa Sager  
Murfreesboro, TN

**Silhouette Farms**  
Bobby & Sally Sigman  
Mt. Pleasant, MS

**NSSHA Trainers  
Committee**

**Mays Trucking LLC**  
Kendall & Amy Mays  
Amherst, VA

**Eddie & Carol Armstrong**  
Tupelo, MS

**Gilliam Lawn & Landscape  
& Gilliam Stables**  
Phillip Gilliam Family  
Summertown, TN

**Circle V Stables**  
Tim & Susan Vance  
Murfreesboro, TN

**Woodbury Funeral Home**  
Woodbury, TN

**Jesse & Lee Wilson**  
Murfreesboro, TN

**Bedford Tack**  
Bell Buckle, TN

**Jerry & Judy Pugh**  
Manchester, TN

**4-J Big Piney Horse Camp**  
Waynesville, MO

**Melissa Bailey**  
Cross Jct., VA

**Bo Robbins Family**  
New Albany, MS

**Malcolm & Terri Driskill**  
Saltillo, MS

**McNatt Farms**  
Bobby McNatt  
Fayetteville, TN

**Watson Metals**  
Manchester, TN

**Gannon Stables**  
Ryan, Wendy & Maddy  
Gannon  
Woodbury, TN

**L & M Awards**  
Shelbyville, TN

**Cherry Acre Farm**  
Steve Cherry  
Denver, NC

**French & Janet Jernigan**  
Bradyville, TN

**Tyson Foods**  
Shelbyville, TN

**Fount Darnell Stables**  
Christiana, TN

**Affordable Driveways  
& Patios By Glen**  
Glen Mitchell  
Murfreesboro, TN

**Merle Norman Cosmetics**  
of Columbia, Tn  
Skylar & Eric Sensat

**We would like to wish everyone good  
luck in the upcoming show season.**



**arnell  
Stables**  
**Christiana, TN**

**Spotted, Walking Performance, and Pleasure.  
Specializing in colt starting and training.**

**Let us put you in The Winners Circle.**

**Now accepting outside horses.**

**Manager/Trainer:  
Fount Darnell (615) 478-4242**

**Trainer:  
Thomas McCormick  
(615) 470-6671**

**4775 Midland Rd  
Christiana, TN 37037**



# Woodbury

FUNERAL HOME



504 W. Main St.  
Woodbury, TN 37190  
Tel: 1-615-563-2311  
Fax: 1-615-563-2316



**Visit our 23,000 sq. ft.  
RETAIL & WHOLESALE STORE  
148 Edd Joyce Road BELL BUCKLE, TN**

**[www.bedfordtack.com](http://www.bedfordtack.com)**

**Manufacturer, Importer & Distributor  
of Quality Tack at Discount Prices!**

**1-800-523-4971**



**Sager Stables presents**  
**Yearling Contender RWGC Honors Nite Fire**  
**Yearling Champion NSSHA Wartrace Show**



**Trained by Tim Sager, Murfreesboro TN**

**Owned by Jeff Hewell**

**Honors stands at Carl Edwards and Sons, Dawson GA 678-438-1535**



**WCC THE MAFIA BOSS**

**WCC THE SHAKEDOWN**

2 Y/O WCC OPEN SHOD HORSE

COMING BACK AS  
A THREE YEAR OLD!

2 Y/O WC & WCC  
LITE SHOD CHAMPION

3 Y/O WC & RWCC  
LITE SHOD CHAMPION

COMING FOUR YEAR OLD  
IN THE OPEN SHOD DIVISION



DESIGNED BY LISA MEDDA PHOTOGRAPHY

**AMHERST COUNTY MAFIA**

TRAINED BY DANIEL FORMAN AT SOUTHWIND STABLES - PONTOTOC, MS

BOTH STALLIONS OWNED BY KENDALL & AMY MAYS

We are a Proud Corporate Sponsor



Tyson Foods, Inc.  
901 W. Jackson Street  
Shelbyville, TN 37160

# Transfers of Ownership

Brent McAlister of Amelia, Oh  
purchased #0924971,  
***I'm Just A Rambler,***  
from Krissy Asher of Mt. Vernon, Ky

Kent I Shelton of Ortonville, Mi  
purchased #1422503,  
***The Blue Eyed Bandit S.E.,***  
from Sharon Enderlein of Pulaski, Tn

Debra Tobiasson of Dekalb, Tx  
purchased #1724734,  
***Don't Kut That Jazz,***  
from Eddie Armstrong of Tupelo, Ms

Debbie Williams of Shelbyville, Tn  
purchased #1624624,  
***Sheza Unbelievable Teen,***  
from Kay Andrews of  
Thompsons Station, Tn

Leighanne Tibbs of Petersburg, Tn  
purchased 31422504,  
***Without a Warning***  
from Keith & Angela Hayes of Wartrace, Tn

Elizabeth Hare of Newport, Va  
purchased #1323017  
***Triggers Gypsy Rose,***  
from George Brooks of Clarksville, Tn

McKayla Q Leamon of Riceville, Tn  
purchased #1524405,  
***Santana's Got Color,***  
from Leslie J Harley of Mt. Eden, Ky

Angelika Van Meetern of Springfield, Illinois  
purchased #0320002,  
***Alens T Spot,***  
from the estate of Bill Bruns

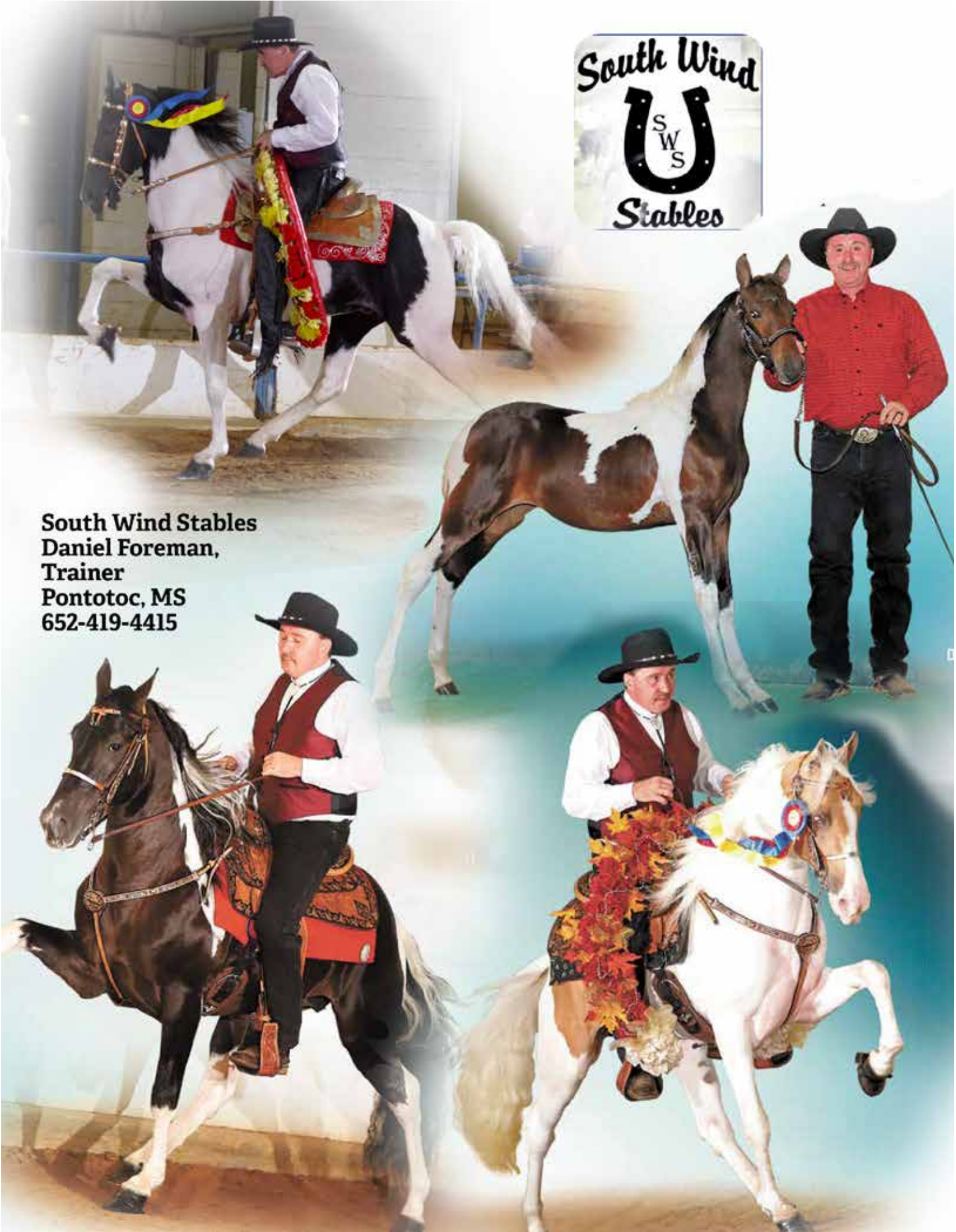
Lena Van Meetern  
purchased #0824716,  
***Blue's Foxy Lady,***  
from the estate of Bill Bruns  
of Winchester, Il







**South Wind Stables**  
**Daniel Foreman,**  
**Trainer**  
**Pontotoc, MS**  
**652-419-4415**





A scenic landscape photograph featuring a dirt road that curves through a lush green field. The sky is filled with large, dramatic clouds, with patches of bright blue visible. The overall mood is peaceful and natural.

Proud Corporate  
Sponsor

The Hayes Family  
Wartrace, Tn  
Keith & Angela Hayes

Best Wishes to NSSHA and  
All Show Participants



# NATIONAL SPOTTED SADDLE HORSE WORLD CHAMPIONS...



## Tennessee Honey

with Emma Howland  
Youth Spotted Saddle Horse Pleasure no  
Headshake World Grand Champion

Owned by Emma Howland  
Trained by Justus Carter Stables



## Taco Tuesday

Youth 11 and Under Country  
Pleasure Reserve World Grand Champion  
with Emma Howland

Open Country Pleasure World Champion  
with Mandy Motes

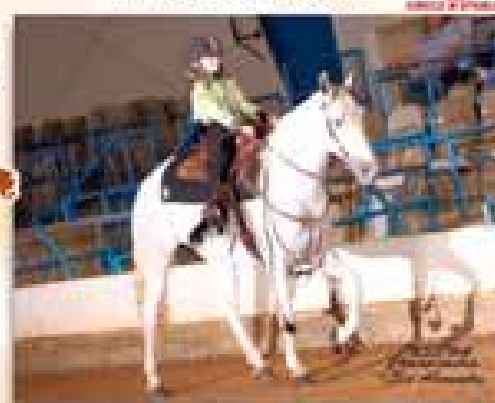
Owned by Belinda Mendenhall  
Trained by Circle M Stables



With Mason West  
Leadline World Grand Champion

## DESIGNED BY THE WOLF

Owned by  
Stephanie Richardson  
and Hollis Kelley



with Maddyx West  
11 and Under Trail Pleasure  
Reserve World Grand Champion  
11 and Under Trail Pleasure  
Reserve World Champion



## Abe's Barb Wire N Roses

with Maddyx West  
11 and Under Country Pleasure World Grand Champion  
11 and Under Country Pleasure Reserve World  
Champion

Owned by Jody & Charla Brannon, Stephanie Richardson  
and Belinda Mendenhall

# GANNON STABLES



TRAINING • BREAKING • SALES

SPOTTED SADDLE HORSE  
TENNESSEE WALKING HORSES

RYAN GANNON - TRAINER

CELL: 615-542-4400



## Seeking Corporate Sponsors

Interested in becoming a NSSHA Corporate Sponsor? We offer a great benefits package for NSSHA Corporate Sponsors; we offer the most advertising, and other benefits of any Spotted Saddle Horse Assn., for your sponsorship dollars.

***For complete information, please contact the  
NSSHA office @ 615-890-2864***

*we will be happy to customize your Sponsorship, to your liking!*





# The Ultimate Horseback Vacation...

Beautiful Wooded Trails, Spacious Campsites,  
Covered Box Stalls, Nightly Entertainment  
And  
Delicious Home-Cooked Meals

Family Owned And Operated  
For Over 50 Years

Join Us in 2020

May 3-8 (3rd Annual Mule Ride) / May 23-29

June 7-12 / August 2-7 / September 13-18

October 4-9 / October 18-23

Open Friday & Saturday prior to scheduled camping days. Call 573-528-1215.

Located Near Duke, Mo on the Big Piney River [4JHorseCamp.com](http://4JHorseCamp.com)



"Since the very beginning of the Spotted Horse breed, our emphasis is to raise a natural gaited Spotted Saddle Horse wearing keg shoes. Also, one that is high headed, smooth, athletic, impressive and intelligent that can be used for coon hunting, team penning, or enjoy nature trails with comfort and pleasure."

## McNatt Farm



Snap Shot  
Stud Fee:  
\$300.00

Fayetteville, TN  
(931-433-8578)  
[www.mcnattfarm.com](http://www.mcnattfarm.com)

For Sale:  
Colts, Yearlings, &  
Broodmares

Rocky Mountain &  
Spotted Saddle Horses



Bo Jr's Snoopy  
Black &  
White, Homozygous  
Stud Fee: \$300



Redwind's Dreamy  
Stud Fee:  
\$300.00



rutherfordfarmerscoop.com

SWFA-SICR-44-16467



## Your essential equine source.

- ANIMAL HEALTH
- BOOTS & CLOTHING
- FENCING
- FERTILIZER
- TACK
- AND SO MUCH MORE

## 4 Locations to serve you.

- Murfreesboro • Eagleville • Woodbury
- Smithville

Murfreesboro

Eagleville

615-893-6212

615-274-6211

RUTHERFORD FARMERS

CO-OP

TRUCK &  
TRAILER  
TIRES, TOO!

Woodbury

Smithville

615-563-4056

615-597-4134



**CHROMED  
BY  
HYTONE**  
**2004 SSHBEA OPEN  
SHOD WC**  
**2015 ALABAMA  
STATE MODLE  
HORSE CHAMPION**  
**REG NSSHA,  
TWHBEA, RHBAA,  
SSHBEA**  
**STUD FEE \$400 LFC**

**Sire of: John Boy Just A Swinging**  
**4x WGC NSSHA and SSHBEA**  
**Spotted Open Shod Two Year Old**  
**Spotted Open Shod Two & Three**  
**Year Old Amateur WGC Unanimous**

**Shadow of Shadows**  
**NSSHA 2013 Weanling WGC**  
**NSSHA & SSHBEA Lite Shod WGC**  
**2016 & 2017 SSHBEA High Point**  
**Lite Shod Horse**  
**2016 TWHBEA High Point Report**  
**Top Ten Champion**  
**2016 National Futurity Two & Three**  
**Year Old Park Pleasure WGC**

**Hytone's Double Deuce**  
**Mississippi Racking & Walking**  
**Park Performance Walking Champi-**  
**on**

**Let HYTONE Light up Your**  
**Foals with CHROME**



**STANDING AT SOUTH WIND STABLES**  
**Daniel Forman Owner- Trainer**  
**Pontotoc MS 662-419-4445**  
**Owned by Bobby & Sally Sigman**

**SweetPro**  
PREMIUM FEED SUPPLEMENTS

(EquiPrime  
EquiLux

**PROBIOTEIN**  
A Multi-Prebiotic, Pro & Post-Biotic Support



**SILHOUETTE FARMS LLC**

Bobby and Sally Sigman  
316 Jon Oaks Dr  
PO Box 85  
Mt Pleasant MS 38649

901-491-0087 Sally  
901-488-3183 Bobby  
662-851-7776 Home  
662-851-0091 FAX

lsigman@hollsouth.net



# *Need Vinyl Siding?*



## **We Have It!**

Lots of Styles, Colors & Textures for  
Whatever Your Needs Are!



## **Financing Available**

We now finance the  
materials & installation  
to qualified buyers

**Call for details**

## **Watson Metals LLC**

238 Interstate Drive  
Manchester, TN 37355

**931-728-8185**

**888-638-2581**

Open Monday - Friday 7 A.M. - 5 P.M.

**[www.WatsonMetalsLLC.com](http://www.WatsonMetalsLLC.com)**



*Thank You  
Members &  
Sponsors*

*for your continued support*



## Spotted Saddle and Tennessee Walking Horses



Steve Cherry: 704-483-5317  
Cell: 704-574-3708  
Allison Home: 704-483-6378  
Cell: 704-350-6906

E-mail: [cherryacrefarm@aol.com](mailto:cherryacrefarm@aol.com)  
8422 Unity Church Rd  
Denver, NC

## **NSSHA OFFICE HOURS:**



**Monday thru Thursday  
9:00 a.m. to 5:00 p.m.  
Central Time  
Closed on Friday**

**Calls answered 7 days a week, Voice mail available.  
If we are unable to answer, please leave a message,  
your call will be answered ASAP.**

**Donna Fletcher  
Office Manager**

# A TO Z PROMOTIONAL PRODUCTS

EMBROIDERY - SILK SCREENING

CAPS • T-SHIRTS • GOLF SHIRTS • JACKETS • AD SPECIALTIES

**Debbie & Mark Williams**

**931-685-0200**





*We Make The Awards  
World Champions Wear!*

**Ribbons, Trophies, Plaques,  
Silver, Crystal,  
Engraving and more!**

**619 Madison St.  
Shelbyville, TN 37160  
931-684-0010  
[www.landmawards.com](http://www.landmawards.com)**

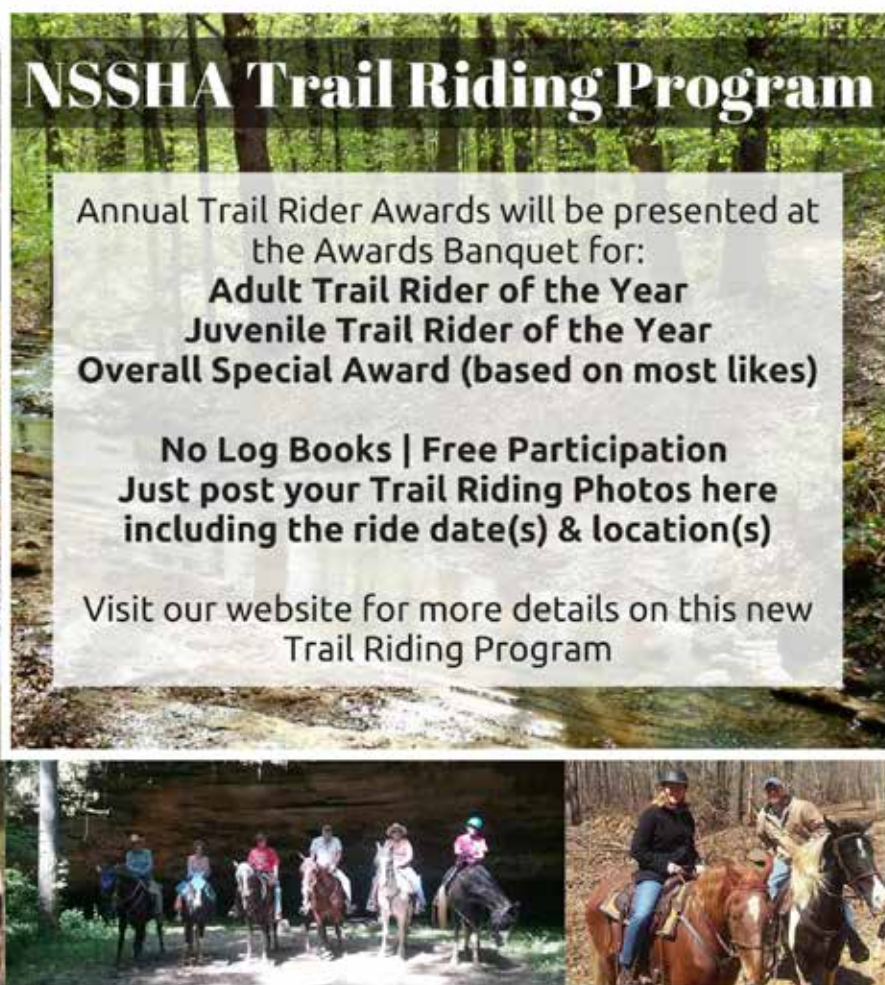


## **NSSHA Trail Riding Program**

Annual Trail Rider Awards will be presented at  
the Awards Banquet for:  
**Adult Trail Rider of the Year**  
**Juvenile Trail Rider of the Year**  
**Overall Special Award (based on most likes)**

**No Log Books | Free Participation**  
**Just post your Trail Riding Photos here**  
**including the ride date(s) & location(s)**

Visit our website for more details on this new  
Trail Riding Program





# Walnut Springs Farm

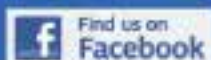
**French & Janet Jernigan**  
**Bradyville, In**

*"Proud Corporate Sponsor"*



Please feel free to post your NSSHA Spotted Saddle Horses photos and info on our Facebook page.

*For Up to the Minute  
information regarding the  
latest news releases, and also  
information regarding shows,  
please visit us on Facebook  
@ National Spotted Saddle  
Horse Assn. We often receive  
numerous calls inquiring if  
shows have been cancelled  
due to rain, so, as information  
becomes available, we post it to  
our Facebook page*





**Proud Sponsor of the  
National Spotted Saddle Horse Association**

**VIAM Manufacturing, Inc.  
87 Park Tower Drive  
Manchester, TN 37355**



# ROWDY & RANCH

[RowdyRanchCatering.com](http://RowdyRanchCatering.com)

THE ROWDY CREW!

832.585.9080 or 931.200.6473

# Affordable

Driveways & Patios  
By Glen



## (615) 400-3030



[www.AffordableDriveways.com](http://www.AffordableDriveways.com)  
Licensed & Bonded



Thank you Rutherford County for making US #1



# MERLE NORMAN<sup>®</sup>

cosmetics

1121 Trotwood Ave., Suite 8  
Columbia, TN 38401  
931-388-7233

*We supply Columbia, TN and surrounding areas with the best makeup and skincare products made in the USA. We offer professional makeup application and makeup lessons! Call us today or message us on Facebook to book your appointment!*

Facebook & instagram:  
@merlenormanmuletown



Locally Owned and Operated  
By: Skylar Sensat

MERLE NORMAN<sup>®</sup>  
cosmetics  
**TO GO**



Call us for FREE shipping on orders  
over \$40 or curbside pickup! 931-388-7233

# *Gorgeous Generator & Roxy Johnson*



*Look for this team at upcoming shows  
Your support will be greatly appreciated  
Roxy Johnson, owner, Dunlap, Tn*



Mid Season photos (and upcoming  
championship pics) can be viewed and  
ordered at SidAbernathy.com

*Sid Abernathy Photography*

2021 HORSE SHOW PROFS

ABOUT

CONTACT

VIEW THE 2021 HORSE SHOW PROFS PHOTOS IN THE MEDIA SECTION

SHOW FLUG

SELECT PHOTOS

BUY

SLIDESHOW





Hamilton, OH | [fb.me/CrestViewMiniAussies](https://fb.me/CrestViewMiniAussies)

**Krazl Creations**  
**Photography & Digital Design**

AD DESIGN | LOGOS  
 MARKETING | SOCIAL MEDIA  
 GRAPHICS | PHOTOGRAPHY

[FACEBOOK.COM/KRAZL CREATIONS DIGITAL DESIGN](https://facebook.com/krazlcreationsdigitaldesign)





*Thank you  
for attending our  
41st Annual  
World Grand  
Championship  
2020*